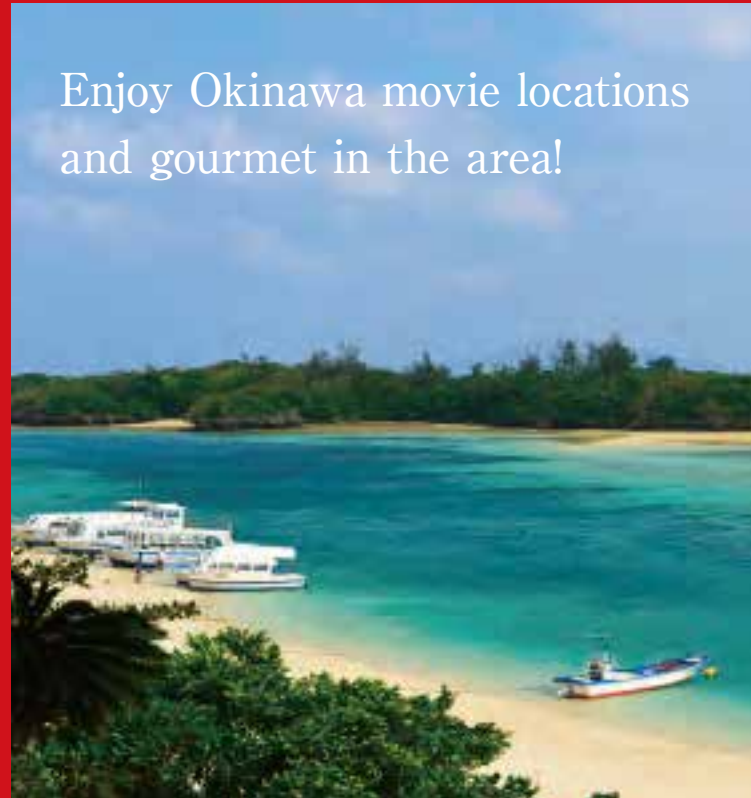


OKINAWA

FILM LOCATION SIGHTSEEING BOOK 2016



Enjoy Okinawa movie locations
and gourmet in the area!



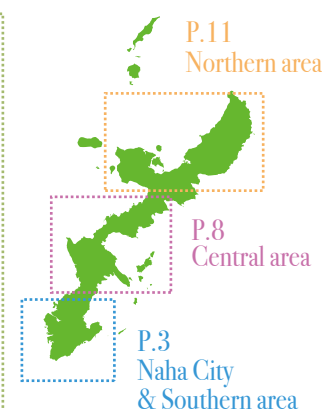
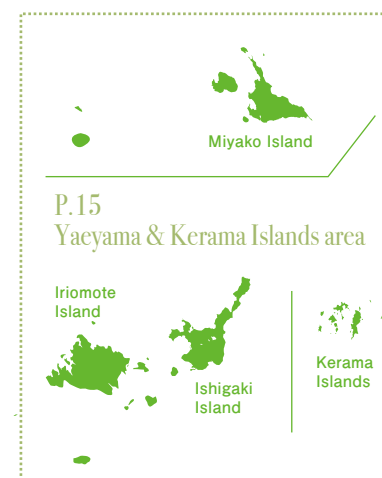


Experience Okinawa with movie tours to fully enjoy your stay

Located in the southernmost part of Japan is the lush island of Okinawa which consists of 160 islands. The prefecture is located in Japan's subtropical region where people can enjoy a mild climate throughout the year, making it a popular resort destination. Okinawa is known for its transparent, beautiful waters, but its charm does not end there. Renowned castle ruins, like Shuri Castle, from the Ryukyu Kingdom era are registered World Heritage sites. In addition to its enchanting, traditional entertainment, and delicious local cuisine, Okinawa's unique history, culture, customs, and arts all attract the interest of people throughout the world. As introduced in this booklet, there have been a number of movies shot in Okinawa filled with the beauty of the island. How would you like to discover Okinawa like never before, and enjoy your stay to the fullest with movie tours? The stories are sure to leave a lasting impression on you.



Contents



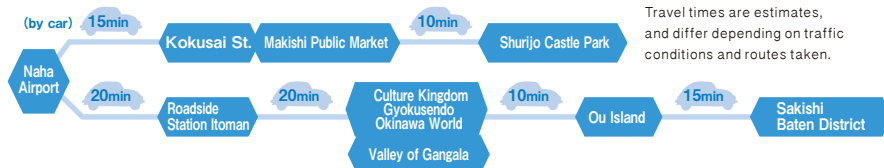
1

Naha City & the Southern Area



A bustling city serving as Okinawa's gateway, and an area with valuable historical heritage sites.

The main tourist destination in Naha City is Kokusai Street, characterized by a concentration of gift shops and restaurants. Shuri Castle Remains, a designated World Heritage site, sits on top of a hill overlooking the city. Going further south into Nanjo City will take you along a coastline dotted with tourist attractions and charming cafes. You can see a spectacular view of the Pacific Ocean from the 1.2km Nirai-Kanai



Popular
tourist
place

1 Shurijo Castle Park "Zinnia Flower" filming location

Shurijo Castle Remains was a central part of the 450-year-long Ryukyu Kingdom era. This World Heritage site is the largest wooden structure in Okinawa, and the colorful castle of Japanese-Chinese influence does not fail to impress. The hill on which it stands is known for being holy grounds and is a must-see attraction during your stay in Okinawa.

- 1-2 Shuri Kinjo-cho, Naha City ● 098-886-2020
- April-June, October-November Free Area 8:00-19:30 Pay Area 8:30-19:00
- July-September Free Area 8:00-20:30 Pay Area 8:30-20:00
- December-March Free Area 8:00-18:30 Pay Area 8:30-18:00
- *Ticket sales end 30 minutes before closing.
- Days Closed: Free Area Open year-round
- Pay Area & Information Center The first Wednesday and Thursday of July
- Adult 820 yen High school student 620 yen
- Elementary & Junior high school student 310 yen Under 6 years old: Free of charge
- [Map Code 33 161 513*36]



2 Shuri Kinjo-cho Stone Pavement

"Zinnia Flower" filming location

Used during the 16th century to get from Shuri Castle to Naha Port, the coral-paved road lined with traditional Okinawan houses will give you a feel of the Ryukyu Kingdom era.

[Map Code 33 161 513*36]



A Ayagu Shokudo

Besides their popular handmade-tofu stir-fry, Ayagu's meals are affordable and are served in generous portions. Their sister store, Nanahoshi Restaurant, is located near Shuri Castle.

- 2-128-1 Shuri Kubagawa-cho, Naha City
- 098-885-6585
- 9:00-21:00 ● Days Closed: Wednesday
- [Map Code 33 192 133*63]



B Katsu Kitchen

Katsu Kitchen specializes in Okinawan soul food: spam and egg rice balls. From standard to western, there is a whole variety of tastes to enjoy!

- 2-8-35 Matsuo, Naha City ● 098-867-9550
- 7:00-18:00 ● Days Closed: Wednesday
- [Map Code 33 157 323*88]

3 Makishi Public Market "Mischievous Kiss 2 - Love in Okinawa" filming location

Stores selling seafood, meat, fruits, vegetables, and other local produce familiar to Okinawans are all gathered together here under one roof. Take some time to experience this lively market.

[Map Code 33 157 264*63]



Popular
tourist
place

Popular
tourist
place



4 Culture Kingdom Gyokusendo Okinawa World "Mischievous Kiss 2 - Love in Okinawa" filming location

You can experience Okinawa's nature, culture and history at Okinawa World, one of the largest tourist attractions on the island. Enjoy one of the most beautiful limestone caves in the east, traditional eisa dance, and making crafts in a 100-year-old traditional Okinawan house. Just a 30-minute drive from the airport, there are activities for everyone to enjoy!

- 1336 Maekawa, Tamagusuku, Nanjo City ● 098-949-7421
- 9:00-18:00 (Final Entry 17:00) ● Open year-round
- Free pass (Gyokusendo Cave, kingdom village, hub natural history park) 1650 yen for adult
4 years old - Junior high school student 830 yen
Gyokusendo Cave & kingdom village 1240 yen for adult
4 years old - Junior high school student 620 yen

【Map Code 232 495 248*22】

6 Ou Island

"Dancing Karate Kid"
filming location

Located in the southernmost part of Nanjo City, Ou Island is connected by a bridge and is famous for its fisheries. The island makes a great drive.

【Map Code 232 467 296*06】



5 Valley of Gangala "SHARK" filming location

You can experience the magnificence of nature and its history of over tens of thousands of years on a guided tour. You can also relax and unwind in the cave's open café.

- 202 Maekawa, Tamagusuku, Nanjo City
- 098-948-4192
- 9:00-18:00 (Tour 10:00, 12:00, 14:00, 16:00)
- *By reservations only ● Open year-round
- One tour fare 2,200 yen
(free of charge lower than the junior high student of the protector companion)
- One student rate 1,700 yen
- One tour fare 1,700 yen 8 (Groups more than 20)

【Map Code 232 525 060*22】



Popular
tourist
place

C Hamabe-no Chaya

Overlook the Pacific Ocean while you relax and enjoy a meal in this cozy hideaway cafe. You can enjoy a variety of their delicious homemade breads, and dishes full of vegetables.

- 2-1 Tamagusuku, Tamagusuku, Nanjo City
- 098-948-2073
- 10:00-20:00 (Last Order 19:30)
- *Open at 14:00 on Mondays
- Open year-round

【Map Code 232 469 491*06】



D Nakamoto Sengyo Tempura Store

Nakamoto Sengyo Tempura Store's fresh, hot tempuras including fish and mozuku seaweed are popular with tourists and locals alike, and make a satisfying snack.

- 9 Ou, Tamagusuku, Nanjo City ● 098-948-3583
- 10:00-18:30 (October-March 10:00-18:00)
- January 1 6:00-17:00 January 2 9:00-17:00 December 31 10:00-17:00
- Open year-round ※Close on a temporary basis.

【Map Code 232 467 296*06】



7 Sashiki Baten District "RUMAH" filming location

Located in the southern part of Okinawa's main island, Sashiki Baten is surrounded by forests and the sea. Enjoy the slow passage of time with its idyllic landscape.



8 Chinen Fishing Port "RUMAH" filming location

Chinen Fishing Port is packed with fishing boats, and many locals come here to fish. You can also see tropical fish swimming in the transparent waters.

【Map Code 33 083 244*85】



E Kunnatu

Mozuku seaweed is popular for its benefits for beauty and health, and Kunnatu's menu offers various mozuku dishes. Satisfy your hunger with their all-you-can-eat mozuku and generous meals.

- 460-2 Shikenbaru, Tamagusuku, Nanjo City
- 098-949-1066
- 11:00-19:00
- Open year-round

【Map Code 232 467 507*41】

F Itoman Gyomin Shokudo

"Today's Fish Sauteed with Butter" uses fresh fish from the morning market and seasoning to maximize natural flavors. The building's Ryukyu limestone adds to the "Okinawan" ambiance.

- 4-17 Nishizaki-cho, Itoman City
- 098-992-7277
- Lunch 11:30-15:00 Dinner 18:00-22:00
- Days Closed : Tuesday

【Map Code 232 484 222*52】



9 Roadside Station Itoman "Ryujin Mabuyer" filming location

This southernmost roadside station in Japan is complete with Itoman City's specialties. Feel free to visit their tourist information center.

- 4-20-4 Nishizaki-cho, Itoman City ● 098-987-1277
- Itoman City Market 9:30-19:00
- Osakana Center 10:00-19:00 Itoman Farmer's Market Umachou Ichiba 9:00-19:00
- Disability Employment Facility Ino 11:30-22:00
- Open year-round

【Map Code 232 484 140*58】

Ryujin Mabuyer The Movie -The Seven Mabui-

2012

This local hero doesn't defeat his enemies. He forgives them!

"The Seven Mabui" is the movie version of the popular TV show. It shows the story of a young man who has taken on the spirit of "Ryujin Mabuyer" and his fight against the Evil Corps who are causing disorder among the Okinawans.

Director: Tomoki Sano

Cast: Shintaro Yamada, ISSA

Production: RYUJIN MABUYA THE MOVIE Production Committee

© MABUYER PROJECT



RUMAH

2015

I saw a dream. Although I didn't understand what was said, a voice called to my soul...

Ayumi is 34 years old and has been working as an information call center operator for the past 10 years. In this day and age when anyone can find whatever they want on the internet, inquiries have dropped markedly. The phone doesn't ring much anymore. Ayumi is plagued by feelings of emptiness and loneliness. She responds to only one or two calls a day, routine inquiries from older people who use the telephone as their source for information. One day, Ayumi is summoned along with several of her coworkers by her boss to be suddenly told she would be laid off.

2015 Director: Yosep Anggi Noen Cast: Erika, Masahiro Arakaki
Tamotsu Oshiro (Shomikigen Theater Co.)

Special Appearance by Tsubu Mustard Ashimine

Production: Yoshimoto Creative Agency Co., Ltd

© Okinawa Prefectural Government



Travel Tips in Okinawa 1

Yui Rail

There are a variety of tickets available for the Yui Rail. Regular one-way tickets are rectangular, and feature a QR barcode, which is placed on the ticket-gate's reader in order to enter/exit the station. There are also 1-day and 2-day passes available, which offer unlimited rides during their period of validity. They can be bought either from a representative at the station or from any ticket vending machine.



Zinnia Flower

2015

A story of two individuals who have lost their love in the same traffic accident.

Ming has lost her fiancé, and Wei has lost his pregnant wife. Both go through the funeral process in complete shock and must learn to face reality. Wei breaks down in tears while listening to his wife's favorite music, Chopin, while Ming mourns her loss for the first time in Okinawa, where she and her fiancé had planned to go on their honeymoon.

Director: Tom Lin

Cast: Karena Lam, Shih Chin-Hang

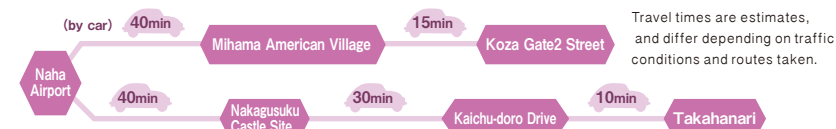
Production: Atom Cinema, Kukurū Vision Inc.

© 2015 Atom Cinema Taipei Postproduction Corp.
B'in Music International Ltd. All Rights Reserved



Where cultures intersect, and tradition, crafts and performing arts thrive.

Easily accessible from Naha, the central region is where you can get to know Okinawa on a deeper level. Mihama American Village is a shopping area fused with American and local culture, and there are many opportunities to see unique, traditional aspects of the island such as eisa dance and pottery, as well. The causeway known as "Kaichu Doro Drive" is a popular cross-ocean drive in the area. You will have no trouble spending a day full of fun in the central region.





10 Mihama American Village "Mischievous Kiss 2 - Love in Okinawa" filming location

The large Ferris wheel serves as the landmark for Carnival Park mall. You can enjoy shopping, dining, and beauty treatments. Live entertainment is also held on the ground floor every weekend.

- 15-69 Mihama, Chatan Town ● 098-926-4116 ● Hours Open: Differs with each shop
- Days Closed: Differs with each shop ● Ferris Wheel Ride: 500yen (15min) [Map Code 33 526 483*14]



11 Koza Gate 2 Street "Chasuke's Journey" filming location

This exotic street remains a strong vestige from the days when Okinawa was under US military control. Gate 2 Street offers American fashion, food, and sights that can only be enjoyed here.

[Map Code 33 591 634*88]

G Charlie's Tacos

The tacos at this first taco shop on Okinawa are now a specialty food representing the island. Enjoy a choice of meat fillings with their delicious homemade sauce.

- 4-11-5 Chuo, Okinawa City
- 098-937-4627
- 10:00-21:00
- Days Closed: Thursday

[Map Code 33 621 304*30]



12 Nakagusuku Castle Site "Chasuke's Journey" filming location

This historic ruin from the Ryukyu Kingdom era is a registered World Heritage site. Standing on a 167 meter-high hill, it overlooks the East China Sea and Pacific Ocean.

- 503 Oshiro, Kitanakagusuku Village
- 098-935-5719
- 8:30-17:00 (May-September -18:00)
- Open year-round

[Map Code 33 411 738*63]



13 Kaichu-doro Drive "Chasuke's Journey" filming location

With the sparkling blue sea on both sides of this 5km causeway, and a parking area where you can get out and take a walk on the beach, Kaichu Doro is a highly recommended drive.

[Map Code 499 575 297*30]



Popular tourist place

H Nuchi-masu Cafe Takahanari

Takahanari's dishes use plenty of mineral-rich salts taken from the seas surrounding Okinawa. You can expect many health and beauty benefits from these "Nuchi-masu" salts.

- 2768 Miyagi, Yonashiro, Uruma City
- 098-983-1140
- Lunch 11:00-15:00 (Last Order 15:00)
- Cafe 10:00-17:30 (Last Order 17:00)
- Open year-round

[Map Code 499 674 664*36]



Movies | Central area

Mischievous Kiss 2 - Love in Okinawa 2014

Mischievous Kiss is back for all the girls in love!

The cool genius with an IQ of 200, and the least intelligent girl in the class who has had the biggest crush on him for 6 years, have finally gotten married! Watch their honeymoon unfold on Okinawa in this special slapstick, love filled edition of the drama!

Director: Kazuya Konaka
Cast: Honoka Miki, Yuki Furukawa
Based On: Kaoru Tada's ITAZURANA KISS (Bessatsu Margaret Publication, Shueisha Inc.)
Production: ITAZURANA KISS2~LOVE IN TOKYO~ Production Committee
Based on the original comic/Itazurana Kiss/created by Kaoru Tada/minato-pro, Miz-plan
©Itazurana Kiss 2~Love in OKINAWA/Partners



Chasuke's Journey 2015

A fantastic movie filmed entirely on Okinawa.

Chasuke is an assistant who serves tea to those in heaven who writes the stories of human lives on earth. Yuri is a girl who Chasuke has fallen in love with, and he learns that she is destined to die in an accident. He goes down to earth and scrambles to save her.

Director: SABU
Cast: Kerichi Matsuyama, Ito Ono, Ren Osugi, Yusuke Iseya, Tina Tamashiro
Production: Bandai Visual, Matsutake, Office Kitano
CHASUKE'S JOURNEY
©2015 BANDAI VISUAL, SHOCHIKU AND OFFICE KITANO

Dancing Karate Kid 2013

A dance and Ryukyu-karate hybrid action movie!

A young dancer goes to Okinawa and meets a master of Ryukyu dance. He finds himself forced to participate in a "battle" to win over a karate dojo. Dancing Karate Kid is a thrilling movie made based on the legends and historical facts of Ryukyu karate!

Director: Tsukasa Kishimoto
Cast: Joey, Yui Koike, Akihito Yagi, Shingo Koyasu
Production: Amazon Laterna

© 2013 TOEI VIDEO / AMAZON LATERNA



Travel Tips in Okinawa 2

Multilingual call center

Okinawa Prefecture/Okinawa Convention & Visitors Bureau provides tourist information, offers translation service and accepts inquiries via the phone, skype and e-mail in the event of a disaster. Feel free to contact us whenever you need help.

<Multilingual call center>

Business hours: 9:00 -21:00

Phone: 0570-077201

Skype ID: call-center-en01, call-center-en02

*In case the number above is not available, call 098-851-7286

Inquiry Form

https://en.okinawastory.jp/contact/contact_us/

Call center UR

http://en.okinawastory.jp/multilingual_call_center/open/



3

The Northern Area



The region covered with Yambaru's lush nature and dotted with major tourist attractions.

The northern most part of the island where Cape Hedo is located, called Yambaru, overflows with nature. Okinawa Churaumi Aquarium is another popular spot attracting over 2,700,000 visitors annually, and the region is characterized by small villages with idyllic landscapes the further up you go. Remote islands connected by bridges, such as Yagaji Island, can be accessed by car as well. Spend some time relaxing in Okinawa's nature and refresh your mind and body.



Popular tourist place



14 Okinawa Churaumi Aquarium

"One Night Stud" filming location

This internationally acclaimed aquarium is known for being one of the largest in the world. Including the world's largest fish (the 8.6m whale shark), the main tank holds manta rays and other fish that inhabit the waters around Okinawa. This popular tourist attraction guarantees to fascinate visitors of all ages and can only be experienced in this northern region.

- 424 Ishikawa, Motobu Town (Ocean Expo Park)
 - 0980-48-3748
 - 8:30-20:00 (October-February -18:30 Final Entry is 1 hour before closing)
 - Days Closed : First Wednesday and the following day of December
 - Adult 1,850 yen High school student 1,230 yen
 - Elementary & Junior high school student 610 yen Under 6 years old free of charge
- [Map Code 553 075 797*77]

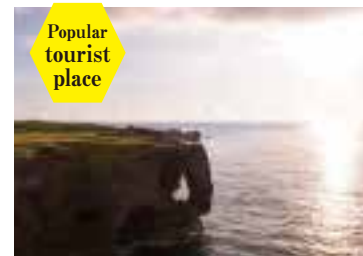


I Kinokawa

Enjoy the local atmosphere at Kinokawa, and dishes made to maximize natural flavors. Their Deep Fried Gurukun uses a local fish, and is a crispy, delicious meal.

- 603 Kengen, Motobu Town
 - 0980-47-5230
 - Lunch 11:00-15:00, Dinner 17:00-21:00
 - Days Closed : Monday
- [Map Code 206 826 198*25]

Popular tourist place



16 Manzamo

"It's Alright. This is Love." filming location

Manzamo overlooks the East China Sea and is another famous spot in Northern Okinawa. Please enjoy the beautiful view of the sunset at dusk, along with the clear blue sea and sky.

[Map Code 206 312 008*41]

15 Yachimun Kissa Shisa-en

"It's Alright. This is Love." filming location

Over 100 shisas decorate Shisa-en, a pioneer among cafés with a 27-year history. Enjoy their drinks that use spring water from the property along with a delicious treat.

- 1439 Izumi, Motobu Town
 - 0980-47-2160
 - 11:00-19:00
 - Days Closed : Monday, Tuesday (or, the next day if it is a public holiday)
- [Map Code 206 803 695*22]





17 Kijoka, Ogimi Village

"Karakara" filming location

Ogimi Village is an idyllic township located in the northern region of Okinawa, famous for their bashofu, a resilient and durable fabric. Bashofu also make wonderful gifts.

18

Yagaji Island

"Acres" filming location

The island is a treasure trove of migratory birds, plants and creatures. There is also a beach where you can enjoy activities like swimming, camping and barbequing.



L Uminoya YOSHIKA

Enjoy the view of both Kouri Bridge and the ocean from your inside table. You can also savor their popular fresh seafood dish which has been introduced on TV and in magazines.

● 321 Kouri, Nakijin Village
● 080-2055-4000 ● 11:00-18:30
● Days Closed: Open year-round [Map Code 485 692 083*30]

K Maeda Shokudo

Maeda Shokudo's popular Beef Soba comes topped with a large portion of bean sprouts and diced beef. This old-style, cozy restaurant is usually crowded with both locals and tourists.

● 985 Tsuha, Ogimi Village
● 0980-44-2025
● 11:00-17:00 *Until supplies last
● Days Closed: Wednesday
[Map Code 485 521 816*30]



19 Nagahama Beach

"Acres" filming location

The white sand and beautiful blue ocean is a bit off the beaten path and is famous among those in the know. This natural beach is an ideal spot to relax and take in the view.

[Map Code 553 143 208*52]

Movies Northern area

It's Alright. This is Love. 2014

Adults are all full of pain, but can find the strength to smile in the end.

The movie is a touching romantic drama about a popular novelist who appears to have a perfect life, and a psychiatrist whose heart is full of pain.

Director: Kim Kyu-tae
Cast: Jo In-sung, Gong Hyo-jin
Production: CJ E&M Corporation, GT Entertainment
Licensed by CJ E&M Corporation
© CJ E&M Corporation and GT Entertainment, all rights reserved



It's Alright. This is Love.
ON SALE
15,200yen+tax
NBC universal entertainment



Halser Acre, The Movie Acres 2015

This superhero is a gift from the earth and has something to fight for!

Halser Acre gets her powers from the earth. She must save the forests where the gods dwell, that are in danger of being destroyed by development, and fight the monsters born from garbage. This superhero story addresses "food education" and "environmental issues" with a touch of comical elements.

Director: Tsukasa Kishimoto
Cast: AKINA, Moeko Fukuda, Tomoji Yamashiro, Shingo Chinen, Kenta Nakaza, Shinchiro Chinen
Production: Halser Movie Partners © 2014 Halser Movie Partners

One Night Stud 2015

How will the fight for the one-year-old end?

Xiao Xin is a Chinese woman about to turn 30 years old. Believing she will find happiness by having a child with no husband involved, she begins her search for the perfect man and meets Zha Yhi. Will their fateful one night stand fulfill her dreams?

Director: Li Xinman
Cast: Jiang Yiyao, Zheng Kai
Production:

© CINEWAY FILMS CO.,LTD.



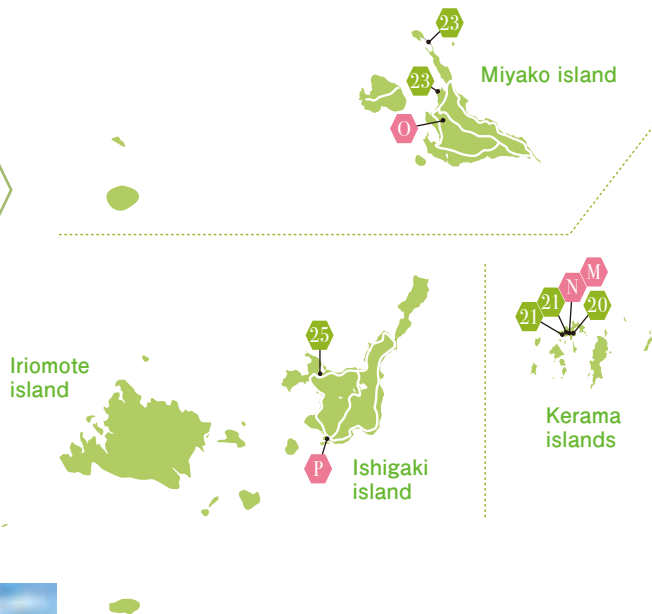
Karakara 2012

A story about an unusual friendship which blossoms in Okinawa.

Pierre is a former professor from Canada who has finally realized his long-time dream of coming to Okinawa. He meets Junko, a housewife who has moved to Okinawa from Tokyo. Fleeing her house after her husband hits her during a fight, Junko joins Pierre on his journey and an unusual friendship begins to blossom between them.

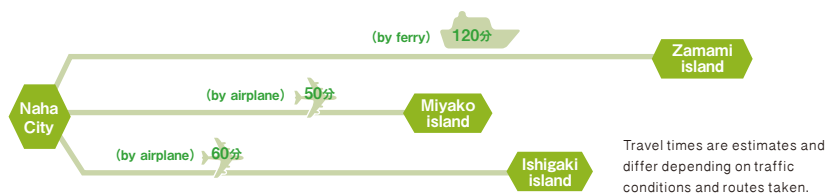
Director: Claude Gagnon
Producer: Takako Miyahira, Samuel Gagnon, Claude Gagnon,
Cast: Gabriel Arcand, Youki Kudoh, Megumi Tomita,
© 2012 KaraKara Partners & Zuno Films

4 Yaeyama & Kerama Islands Area



Tropical resorts surrounded by the beautiful sea.

One of the many charms of Okinawa is how easy it is to access other remote island groups like Yaeyama, Miyako, and the Keramas by plane or boat. Visiting Ishigaki is now easier with their new Painushima Airport. There are also the beautiful reefs of Miyako, the transparent "Kerama Blue" waters of Zamami and Tokashiki, established as "Kerama Shoto National Park" on March 5, 2014. A visit to any of these tropical paradises will leave you feeling rejuvenated.



Popular
tourist
place

20 Takatsukiyama Lookout Point "Kerama Blue" filming location

This 137m high observation point is the most popular on island. Fully experience the "Kerama Blue" with a view of the neighboring islands, coral reefs, and transparent waters. [Map Code 905 232 161*14]



21 Ama Beach "Kerama Blue" filming location

Located on the west side of the island, the beach is famous for its sea turtles. With a campground also on site, you can get more intimate with the clear blue sea. [Map Code 905 200 667*47]



M Kahuushido

Kahuushido café & bar is a part of Shimayado Akabana. Their taco rice is a popular choice, and the 100-year-old traditional wooden structure is also one of its charms.

- 71 Zamami, Zamami Village
 - 090-4346-6286 ● 11:00-23:00
 - Open year-round *Close on a temporary basis.
- [Map Code 905 231 019*74]



22 Kaminohama Lookout Point "Kerama Blue" filming location

The two-story observation point near Zamami Port has a 360 degree view of the East China Sea. It's a scenic spot where you can behold the beautiful sunset and ocean. [Map Code 905 200 736*00]

N Restaurant Marumiya

Serving mostly Okinawan cuisine, Marumiya is highly rated on highly rated on travel websites. Their homemade jimmamii tofu, made from peanuts with their original sauce, makes a delicious

- 432-2 Zamami, Zamami Village
 - 098-987-3166
 - Lunch 11:00-15:00 (Last Order 14:30) Dinner 18:00~23:00 (Last Order 22:30)
 - Days Closed: Wednesday
- [Map Code 905 231 135*74]





23

Ikema Bridge

Popular Location
for TV commercials
and magazine shoots.

Ikema and Miyako Islands are connected together by a 1,425m long bridge, and both islands are full of hidden beaches. It's a great drive with a breathtaking view of the colorful seas.

[Map Code 310 871 564*11]



24

Sunayama Beach

Popular Location for TV commercials
and magazine shoots.

The arch shaped rock is the beach's trademark, with the cobalt blue ocean spreading out before the powdery white sand dune. The beach is loved by locals and tourists alike.

[Map Code 310 603 294*52]



Popular
tourist
place

0

Koja Soba

Founded in 1932, Koja Soba has preserved their original taste throughout the years. Their soba noodle dishes are a must-have during your stay on Miyako Island.

- 1517-1 Shimozato, Hirara, Miyakojima City
- 0980-72-8304
- 11:00-20:00
- Open year-round *Close on a temporary basis.

[Map Code 310 424 337*44]

25

Kabira Bay

"How to Make a Penguin Pair"
filming location

The beach is located on the north-west coast, and is said to be the most beautiful landscape in Ishigaki. Enjoy underwater scenes of the clear ocean from a glass bottom boat.

[Map Code 366 361 620*36]

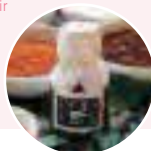


P

Pengin Shokudo

Run by the Penguins, creators of the "Penguin Shokudo's Ishigaki Island Spicy Oil". You can enjoy meals that use local ingredients, awamori, or their 「Jah-jan rice bowl」 which makes an appearance in the movie.

- 199-1 Okawa, Ishigaki City
- Lunch 11:30-until sold-out Dinner 18:00-until sold-out
- Days Closed : Sunday *Close on a temporary basis.
- <http://penshoku.com/> [Map Code 366 003 148*44]



Movies

Yaeyama & Kerama Islands

Kerama Blue

2015

Maybe, I made it more difficult.

A couple arrives from Europe to stay at a guesthouse in Zamami Village. Their conversations are in English and neither understands Japanese. Hana Hanashiro, owner of the guesthouse, and Yuhi Hanashiro, Hana's grandson who works there, only speak Japanese. While Meg grows closer to Hana even though they do not understand each other's language, Chris is miserable, moody and unable to adjust to the guesthouse or island environment. His stubbornly closed heart is awakened by something he sees underwater.

Director : Tsukasa Kishimoto Cast : Daniel Lopez, Haruka Tobaru, Shogen, Taeko Yoshida, Murota Donsako
Production : CMC Inc.
© Okinawa Prefectural Government



How to Make a Penguin Pair

2012

The birth of "Ishigaki island Spicy Oil" and the "Penguin" (penguin) pair!

Based on the true story of the Penguins, owners of the "Penguin Shokudo", the movie depicts several chapters in their lives, such as moving to Ishigaki, encounters with local cuisine, how they went on to become pioneers of the edible Spicy oil, and create their famous "Penguin Shokudo's Ishigaki island Spicy Oil".

Director : Katsutoshi Hirabayashi
Cast : Koike Eiko, Kigone Wang
Production : Ritz Productions, VAP, United Cinemas, KDDI, dub, Breath, Star Cast Japan

©2012 RitzPro / VAP / UNITED CINEMAS / KDDI / dub / Breath / StarCastJapan

SHARK

2013

A drama depicting the sorrow of man.

In order take revenge on his family, Han Yi-soo has been through hell and has come back as an invincible man who would even hold a knife to his lover. His story is one of sorrow and love, standing between what is good and evil, and fighting for what he believes in.

Director : Park Chan-hong
Cast : Kim Nam-gil, Son Ye-jin, Ha Seok-jin
Production : KBS

© 2013 KBS. All rights reserved



Travel Tips in Okinawa 3

Drive in Yanbaru

"Yanbaru Kuina" (Okinawa Rail), a nationally protected species, inhabits only in Yanbaru (northern part of Okinawa). What makes it unique is that although as a bird it is unable to fly. Since 1981 when the Yanbaru Kuinawas described as a new species, the richness of nature in Yanbaru has been recognized among many people. The birds sometimes have come down on roads, so please be careful when you drive in Yanbaru.

