

# Okinawa Remote Islands Access Map



West Pier (Taketomi Island)

01

# Yaeyama Islands

八重山諸島

After about a one-hour flight from the main island of Okinawa, you will arrive at Ishigaki Island, the gateway to the Yaeyama Islands, as well as Taketomi Island, home to beautiful traditional townscapes with red-tiled roof houses and white sand pathways.

Why not enjoy an island-hopping trip around the fascinating Yaeyama Islands, made up of 11 inhabited islands and many uninhabited islands. Almost 90% of Iriomote Island is covered with virgin forests and untouched nature, and on Yonaguni Island, the westernmost island, you can see each day's last sunset in Japan.



## Minsa Weaving

Since ancient times, according to local tradition, women would convey their feelings to the men they loved by sending them hand-woven obi. Minsa textiles feature the Kasuri pattern consisting of four and five small rectangles, which means "love me forever."



## Yaeyama Soba

Yaeyama soba uses round, thin, straight noodles compared to Okinawa soba noodles, and the toppings include shredded kamaboko fish cake and pork.



## Ishigaki Beef

Ishigaki beef is a type of Japanese Kuroge Wagyu black beef born and raised on the Yaeyama Islands, the southernmost part of Japan. It is tender and has a rich and juicy taste.



## Kabira Bay (Ishigaki Island)

Kabira Bay is one of Ishigaki Island's most famous scenic spots and has been selected as one of the 100 Landscapes of Japan. You can observe colorful tropical fish from a glass-bottom boat.



## Monument at the westernmost point in Japan (Yonaguni Island)

From Irizaki, the westernmost point of Japan, you can see each day's last sunset in Japan.



## Mariyudu Falls (Iriomote Island)

Mariyudu Falls, selected as one of the 100 Best Waterfalls in Japan, offers visitors a beautiful and mysterious appearance as water cascades down into the basin.

\*Since April 2020, a certified guide has been required to accompany visitors touring the land area of Iriomote Island.



## Red-Tiled Roof Houses (Taketomi Island)

Red-tiled roof houses dot the landscape across a traditional Okinawan village. This area has been nationally designated as an Important Preservation District for Groups of Traditional Buildings and has been preserved by the local people.

02

# Miyako Islands

宮古諸島

The Miyako Islands, made up of eight inhabited islands of various sizes, are located about 300 km southwest of the main island of Okinawa. These islands offer many amazing views, including three great bridges such as the Irabu Ohashi Bridge that spans the beautiful sea known as Miyako Blue. Why not immerse yourself in idyllic natural surroundings, experience the warm hospitality of friendly islanders, and tour the islands at a leisurely pace as if you always lived there?



## Mangoes

Mangoes from Miyako Island are grown using only sunlight and ripen naturally. They have a high sugar content and a melt-in-your-mouth texture.



## Miyako Soba

Miyako soba noodles have been loved by generations of locals. These thin, straight, and flat noodles are smooth and chewy, and go well with the light, addictive broth.



## Miyako Jofu

Miyako Jofu, nationally designated as an Important Intangible Cultural Property, is made with exquisite craftsmanship over the entire process from the cultivation of ramie used as the raw material for the thread to weaving.



## Irabu Ohashi Bridge

At a total length of 3,540 m, the bridge connects Miyako Island and Irabu Island. It is the longest toll-free bridge in Japan. From the bridge you can enjoy the beautiful gradation of the sea.



## Pinda Asu Tournament (Tarama Island)

This goat fighting tournament is held to promote raising goats and tourism in Tarama. The sight of them fighting with their horns clashing against each other and their fighting spirit is truly impressive.



## Utopia Farm Miyakojima (Miyako Island)

With a focus on 50 varieties of bougainvillea collected from all over the world, you can observe colorful tropical flowers, trees and tropical fruits up close.



## View from Ryugu-jo Observation Deck (Kurima Island)

From the three-story observation deck, modeled after Ryugu-jo Castle, you can enjoy a spectacular panoramic view of the beautiful sea, interwoven with sand and coral reefs, and the Kurima Ohashi Bridge.

03

# Kume Island

久米島

Kume Island is rich in nature and the entire island has been designated as a Prefectural Natural Park. During the Ryukyu Dynasty, it was called “Kumi no Shima” for its extraordinary beauty. “Kumi no Shima” means the most beautiful island among all the Ryukyu islands. Enjoy a relaxing time on this simple and peaceful island.



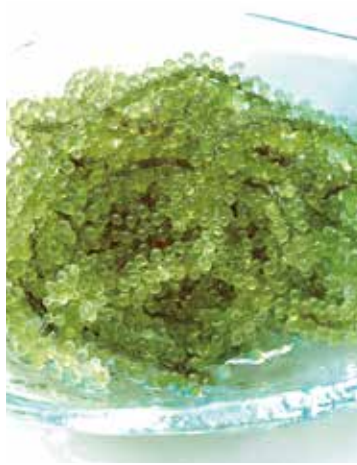
## Kumejima Tsumugi

Kumejima Tsumugi is made from a traditional technique that has been nationally designated as an Important Intangible Cultural Property and features a dyeing process that uses only native plants that grow naturally on the island. You can experience weaving coasters and dyeing shawls.



## Kuruma Prawns

Kume Island is the largest producer of Kuruma prawns in Japan. Incredibly fresh Kuruma prawns, grown in the deep ocean waters off the coast of Kume Island, can be enjoyed at restaurants on the island in a variety of ways, including as sashimi, salt-grilled and many other dishes.



## Sea Grapes

Sea grapes of Kume Island are cultivated using deep ocean waters and the island boasts the highest production in Japan. Their popping texture is addictively delicious.



## Kumejima Akadori

Red broilers from Kume Island are raised with specially developed feed and local spring water. Kumejima Akadori is the brand of chicken from Kume Island that has gained attention in recent years due to its excellent meat quality and near odorless smell.



## Hate no Hama

An island of pure white sandy beaches about 5 km off the coast of Kume Island. This is a popular scenic spot surrounded by a spectacular 360-degree emerald green sea.



## Tatami Ishi

Tatami Ishi is a nationally designated natural monument. More than 1,000 turtle shell-like rocks can be found along the beaches, which are truly works of art created by nature.



## Miifugaa Rock Formation

This strange rock formation was created by nature through wind and tide erosion. Around the summer solstice, you can see a magnificent view of the morning sun shining through cracks in the rocks.

04  
**15 Remote Islands**  
 15 離島

There are 15 islands of various sizes around the main island of Okinawa, from those that are not connected to the main island by bridge and can be reached in just 15 minutes by high-speed boat to those that can be reached in about an hour by plane. Each island, although close in location to the main island, thrives in its own precious ecosystem and unique traditional culture. You will find charm and wonder that differs from that found on the main island. Once you experience the leisurely and peaceful flow of time here away from the hustle and bustle found in any city, you may not want to ever leave. Why not discover your own special island that you've never seen, heard of or experienced before?



**Iheya Island**

Iheya Island is surrounded by rich nature and peaceful scenery. "Kumaya Cave," located on the north side of the island, has been designated as a Natural Monument of Okinawa Prefecture and is said to be the southernmost site of the "Ama-no-Iwato legend" in Japan.



**Noho Island**

Noho Island is connected to Iheya Island by a bridge. In recent years, it has become popular as a diving spot. The Noho Island Observation Deck is a recommended spot where you can look over the village, the sea, and beautiful nature.



**Izena Island**

Izena Island is an island with a long history and many legends. Izena Tamaudun, a mausoleum where the relatives of King Sho En from Izena are laid to rest, has been designated as a Tangible Cultural Property of Okinawa Prefecture.



**Minna Island**

Seen from above, Minna Island looks like a croissant, so it is also known as "Croissant Island." This is a popular island for enjoying marine leisure activities including swimming in the sea.



**Ie Island**

Ie Island is known for Mt. Gusuku, "Iejima Tacchu" that juts out from the flat island. It takes about 15 minutes to climb to the summit, where you can enjoy a spectacular 360-degree view.



**Tsuken Island**

Surrounded by natural beaches and a blue sea, Tsuken Island is rich in nature and carrot fields cover about 60% of the island's fields. "Tsuken carrots" are famous as a local specialty and the island is affectionately called "Carrot Island."



**Kudaka Island**

Kudaka Island is said to be the place where "Amamikiyo," the god who created the Ryukyu Islands, descended from the sky. Sacred rituals are still practiced and people pray to the gods here. Traditions that have been preserved by the local people since the days of the ancient Ryukyu Dynasty can still be found here.



**Tokashiki Island**

Tokashiki Island, with its beautiful Kerama Blue sea and lush greenery, is well-known as a habitat for sea turtles. Enjoy trekking and walking in nature.



**Zamami Island**

Zamami Island is popular for its year-round diving activities, whale watching during the winter, and spectacular scenery from its observation decks.



**Aka Island**

Aka Island, located on the western side of the Kerama Islands, is the perfect place to rent a bicycle and take a leisurely tour around the island. You can also enjoy walking around the village and take in the view from the observation deck.



**Geruma Island**

Geruma Island is connected to Aka Island by a bridge. During the Ryukyu Dynasty, it was a stopping point for ships that traveled between China and Naha, and the "Takara Residence," which was built around that time, has been nationally designated as an Important Cultural Property, and offers you an opportunity to enjoy Okinawa's unique architecture.



**Tonaki Island**

The entire traditional village landscape of Tonaki Island has been nationally designated as an Important Preservation District for Groups of Traditional Buildings. The footlight path that lights up at sundown offers an unforgettable nighttime experience for those who stay overnight.



**Aguni Island**

Aguni Island was formed from deposits created by volcanic activity millions of years ago, where you will find unique landscapes across the island. As this island is abundant in nature with little artificial light, the starry sky is a must-see.



**Kita-Daito Island**

Kita-Daito Island is located about 360 km east from the main island of Okinawa, and is the first place in Okinawa to see the sunrise. As this island was developed by the people of Hachijo Island during the Meiji period, a unique culture that blends Okinawa and Hachijo Island cultures has been passed down.



**Minami-Daito Island**

Minami-Daito Island, floating in the Pacific Ocean, moves about 5 to 7 cm annually toward the main island of Okinawa and offers a unique natural environment. "Hoshino Cave" captivates visitors with its overwhelmingly beautiful and fantastic views.

## Island Travel Tips

1. Please make reservations in advance if you plan to stay overnight.
2. Depending on the season, some hotels and shops may be closed for long holidays. Please arrange for meals or prepare food in advance.
3. Please refrain from walking around the village in swimsuits or shirtless.
4. Few shops accept electronic payment, so please plan to carry extra cash.

Okinawa's remote islands can cause inconvenience in many ways, such as a lack of electronic payment options and guide signs, poor cell phone connections, and a lack of convenience stores, but the islands offer breath-taking beautiful nature and scenery that can only be found here. Please observe proper etiquette on Okinawa's remote islands and enjoy touring the islands.



*Come visit us on  
Okinawa's  
remote islands.*

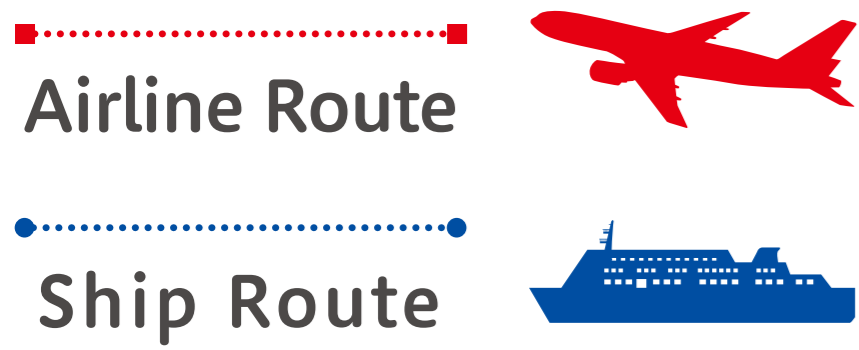


あなたを待ってる島がある  
沖縄しまさんぽ  
沖縄離島の観光情報サイト

<http://ritohaku.okinawastory.jp>



# Okinawa Remote Islands Access Map



Hate no Hama



Irabu Ohashi Bridge



Residence with Red-Tiled Roof (Tonaki Island)

